

Г. Г. КРИВОШЕИНЪ и А. А. САТКЕВИЧЪ.

Военные инженеры.

ВИСЯЧІЙ МОСТЪ

с о

СРЕДНИМЪ ШАРНИРОМЪ.

СТАТИЧЕСКИ-ОПРЕДѢЛИМАЯ СИСТЕМА.

ЧЕРТЕЖИ.

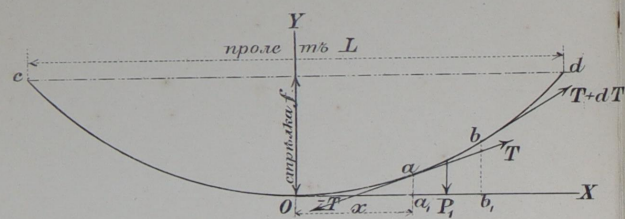
(Отдѣльный оттискъ изъ Инженернаго журнала 1895 г. №№ 1, 2, 3 и 4).

С.-ПЕТЕРБУРГЪ.

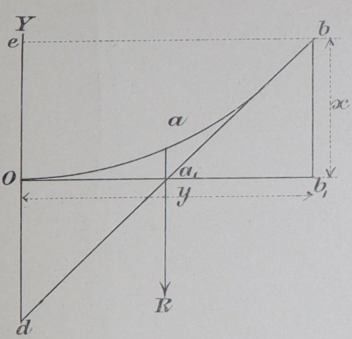
Типографія и Литографія В. А. Тиханова, Садовая, № 27.

1895.

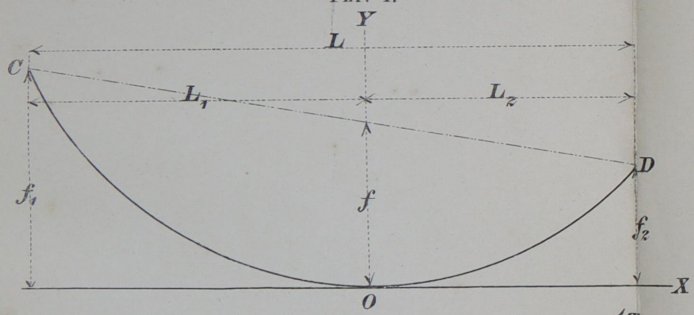
Фиг. 1.



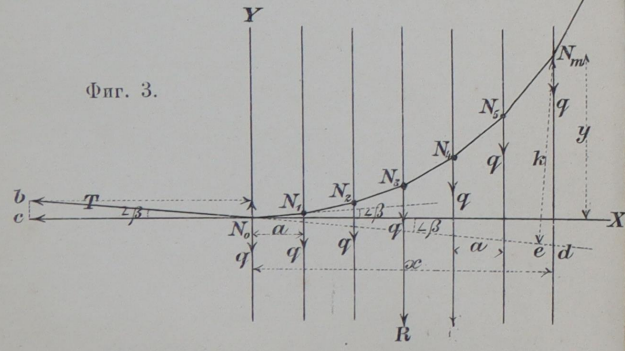
Фиг. 2.



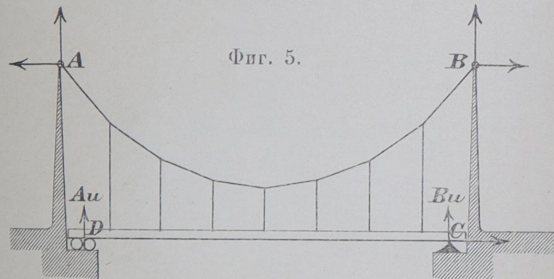
Фиг. 4.



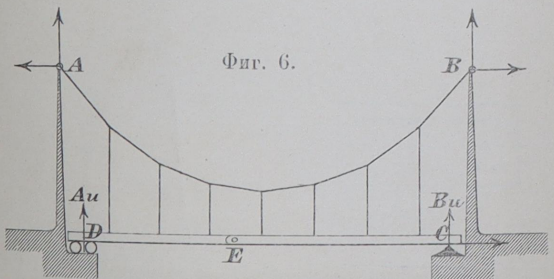
Фиг. 3.



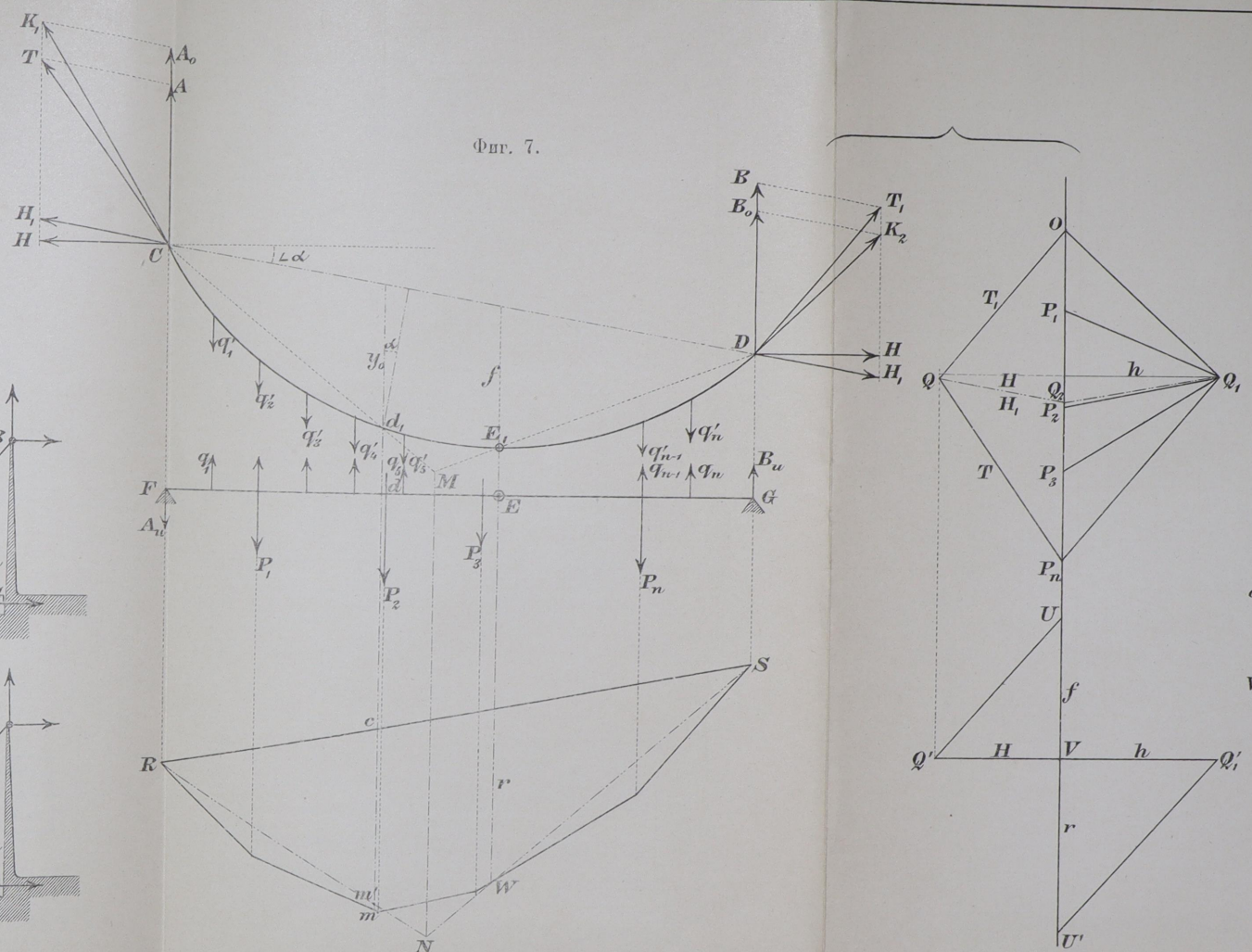
Фиг. 5.



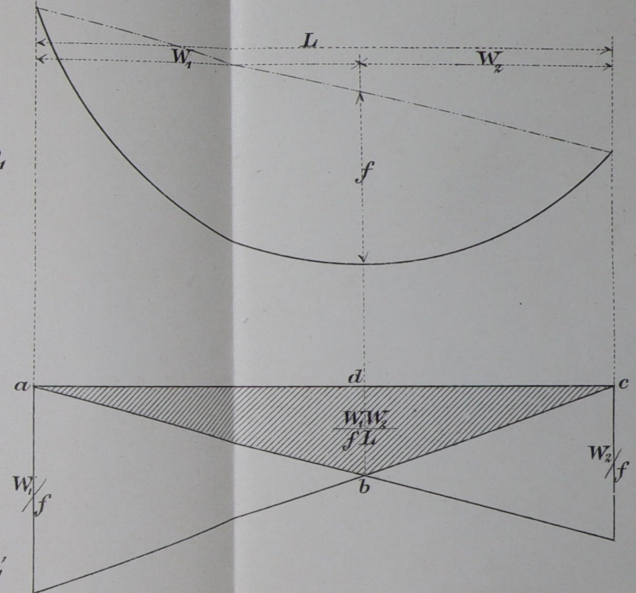
Фиг. 6.

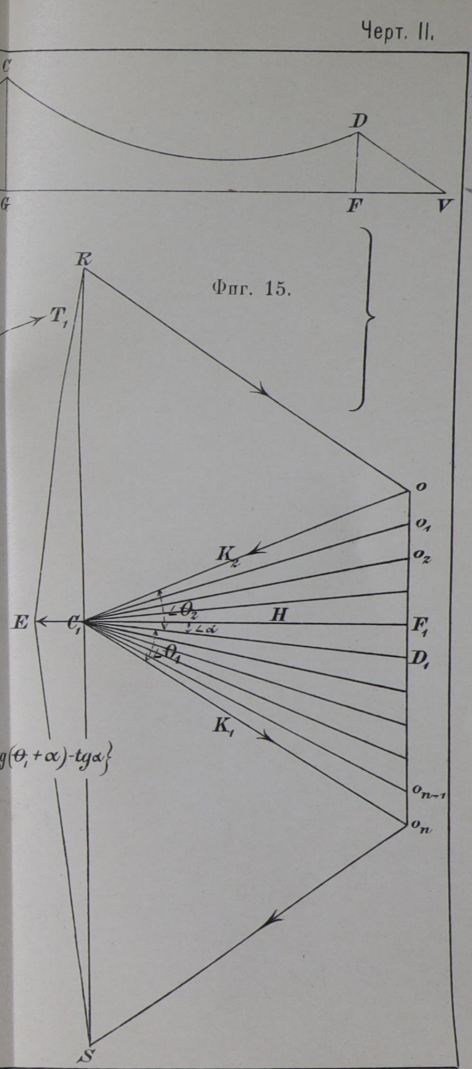
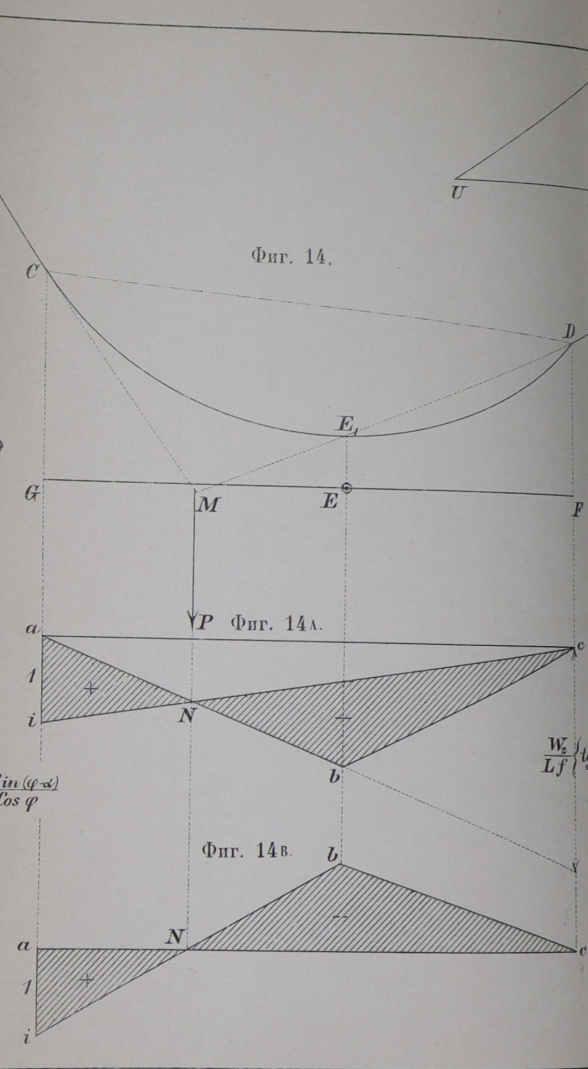
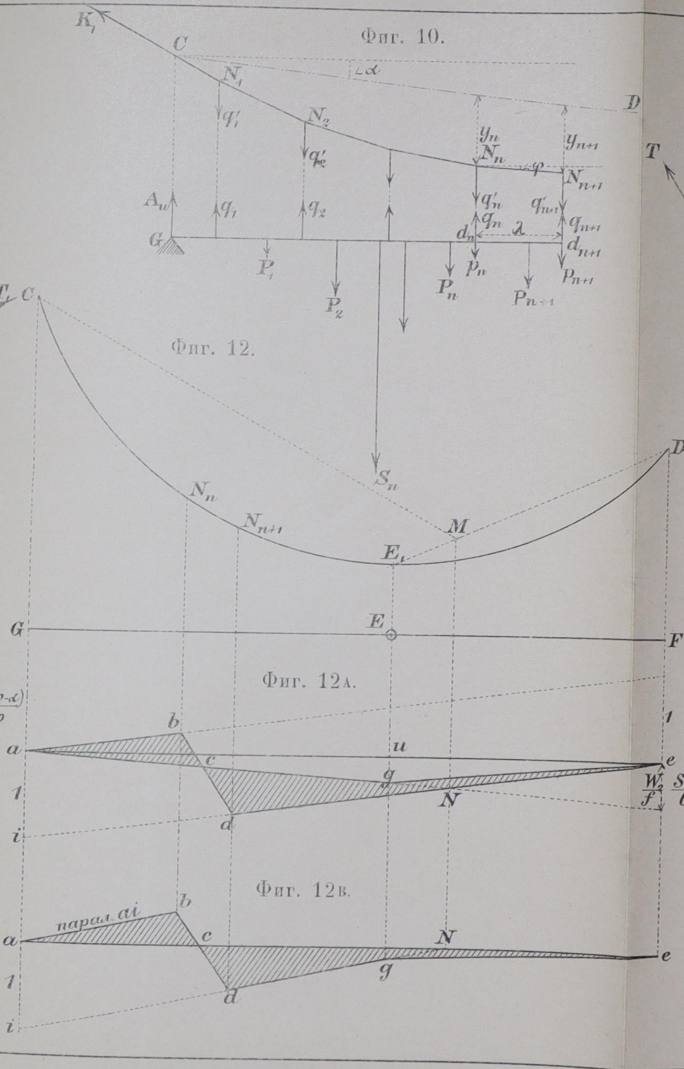
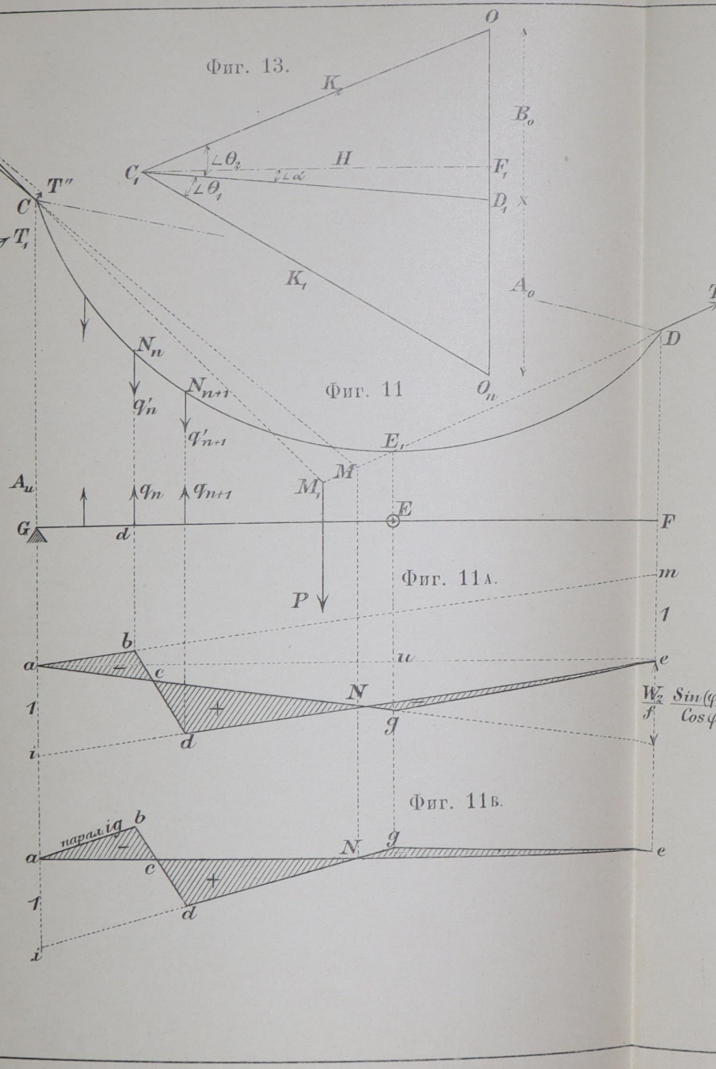
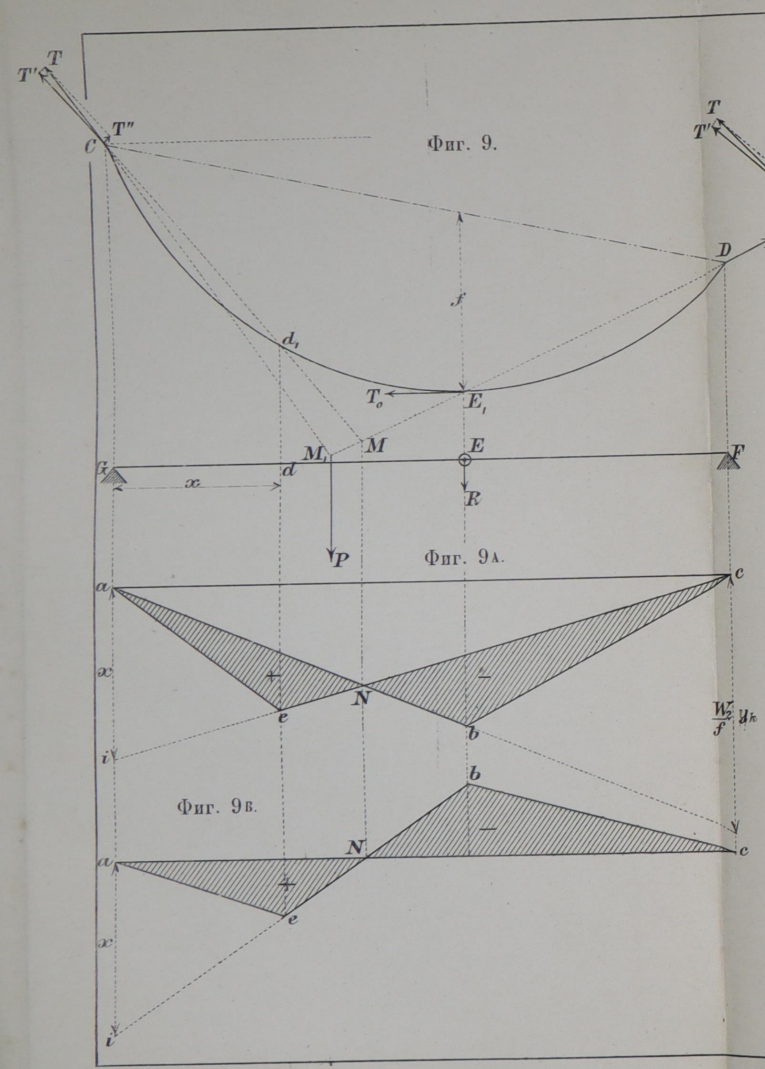


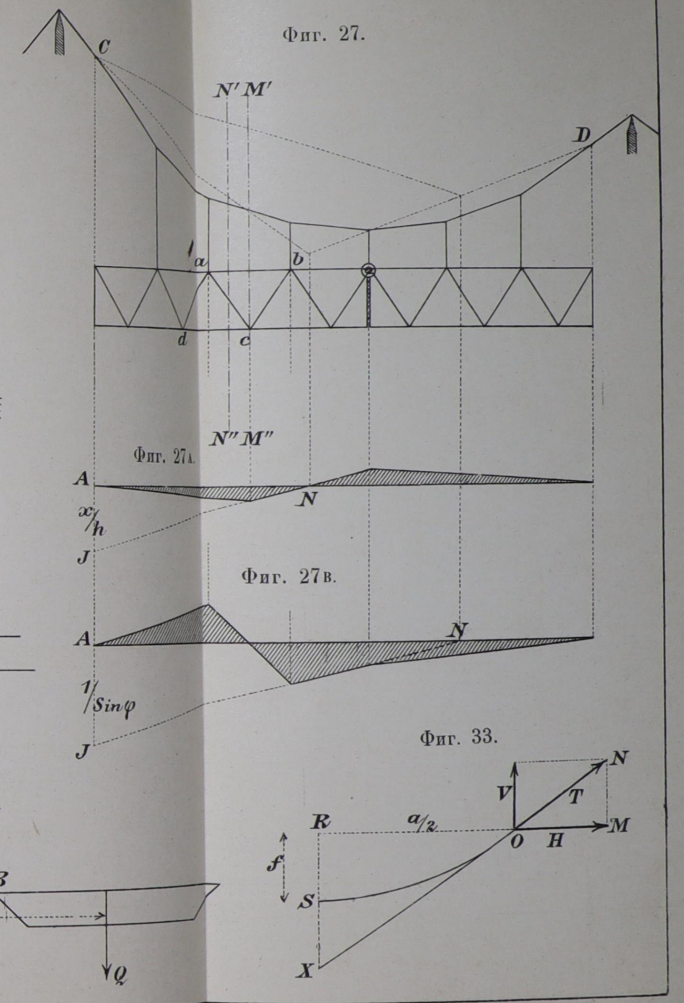
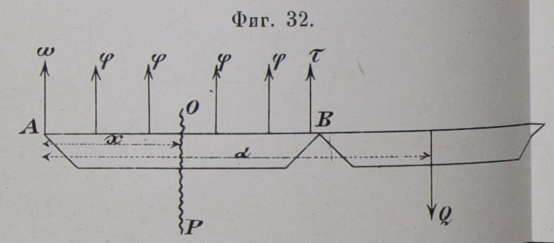
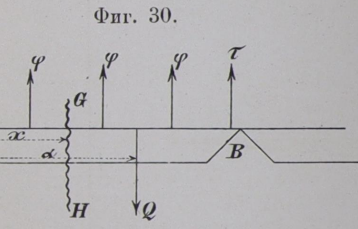
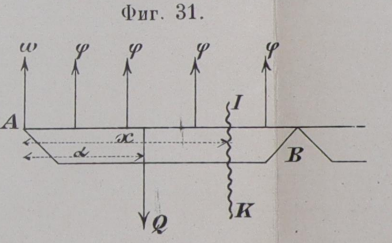
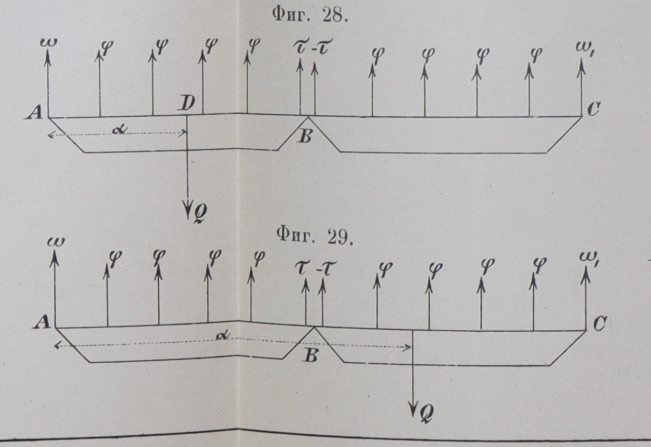
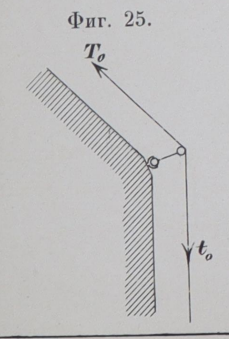
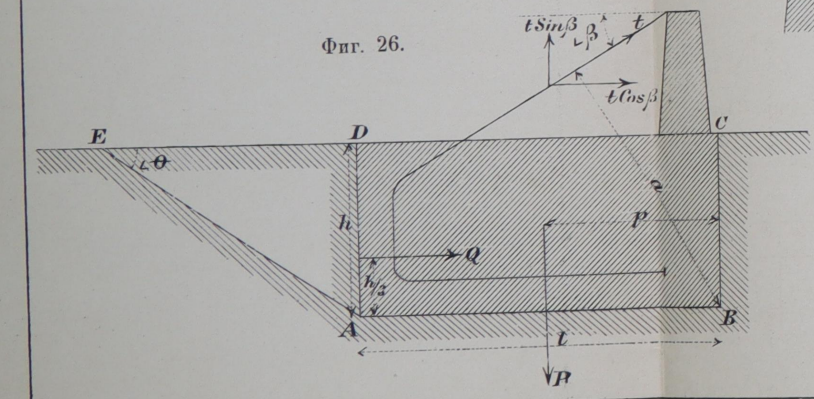
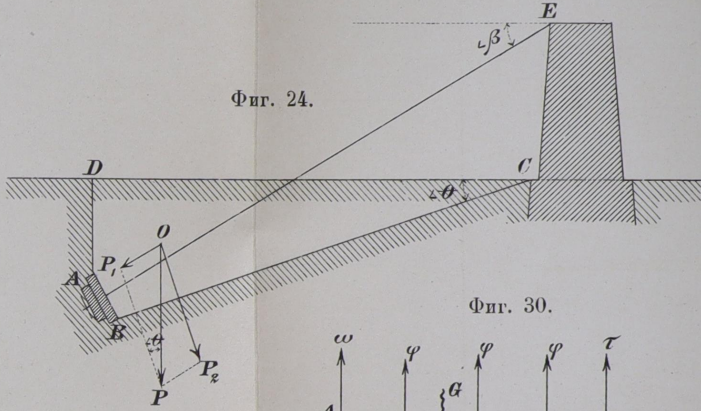
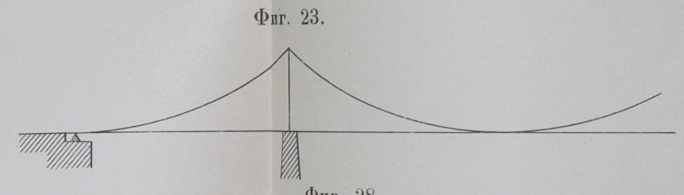
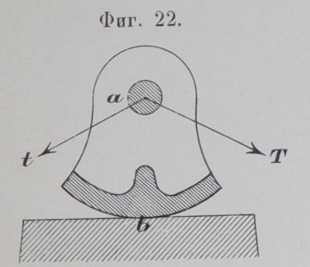
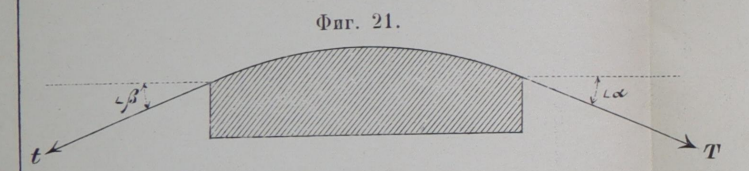
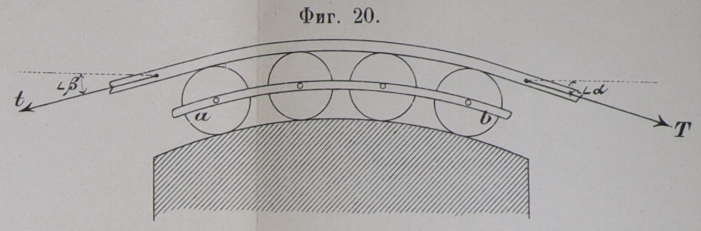
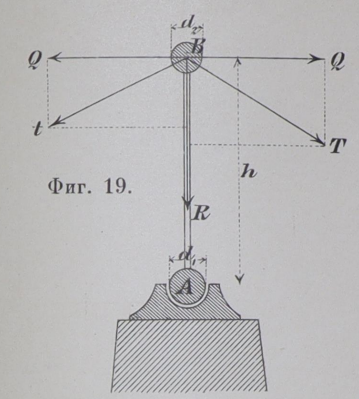
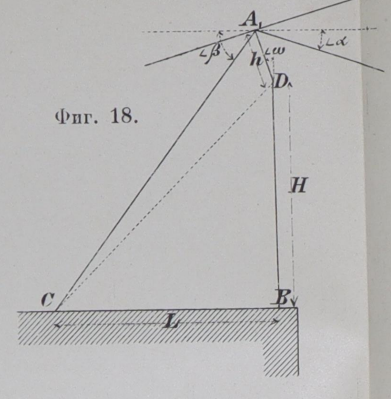
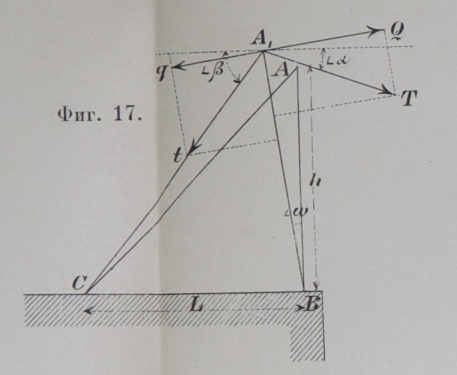
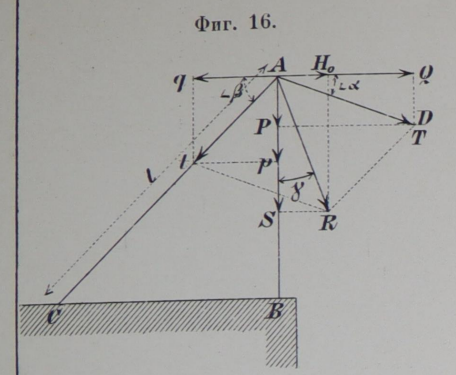
Фиг. 7.

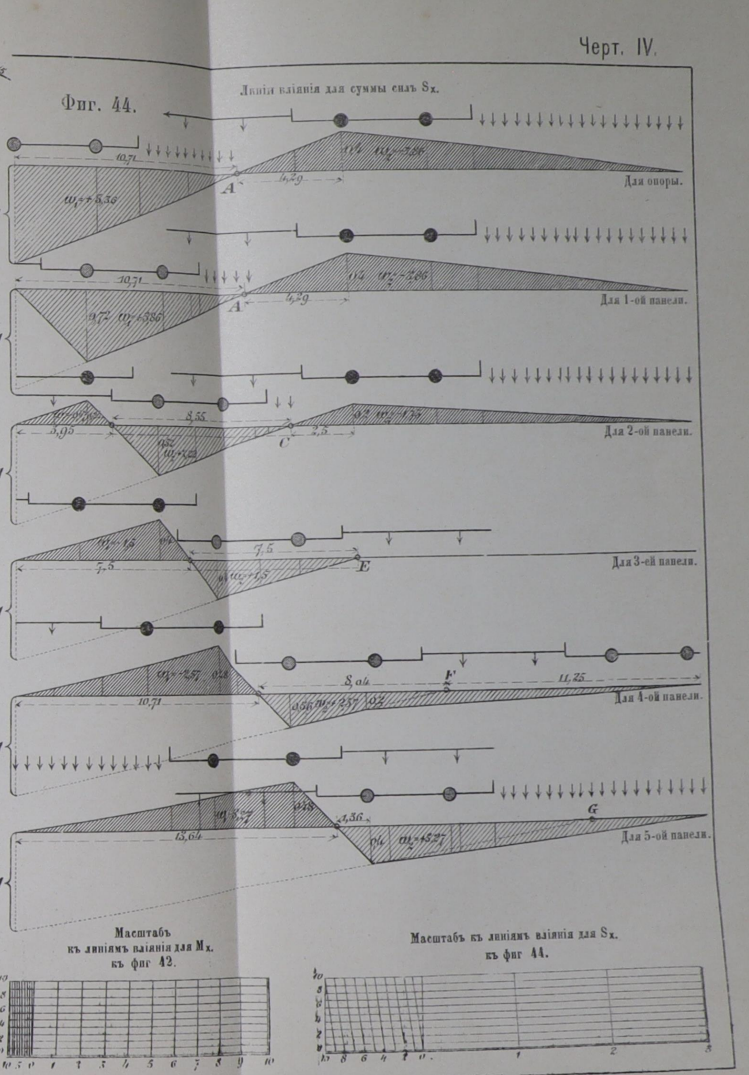
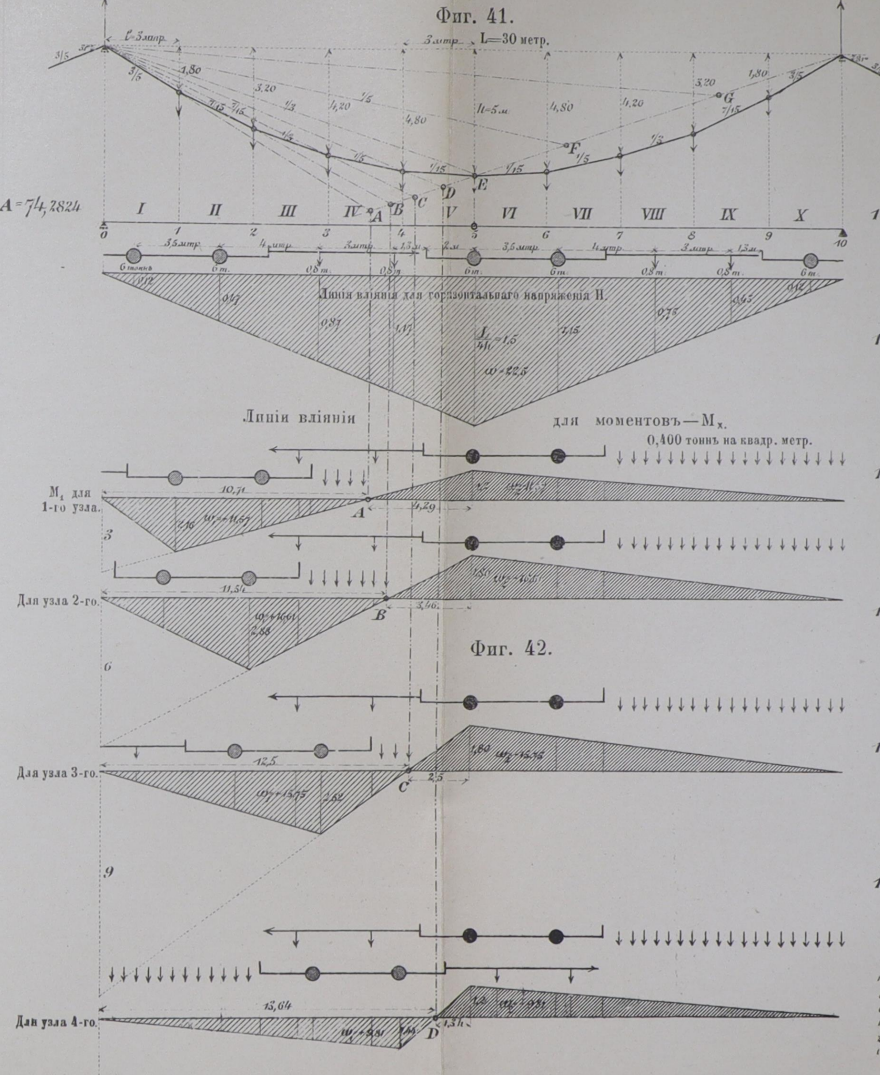
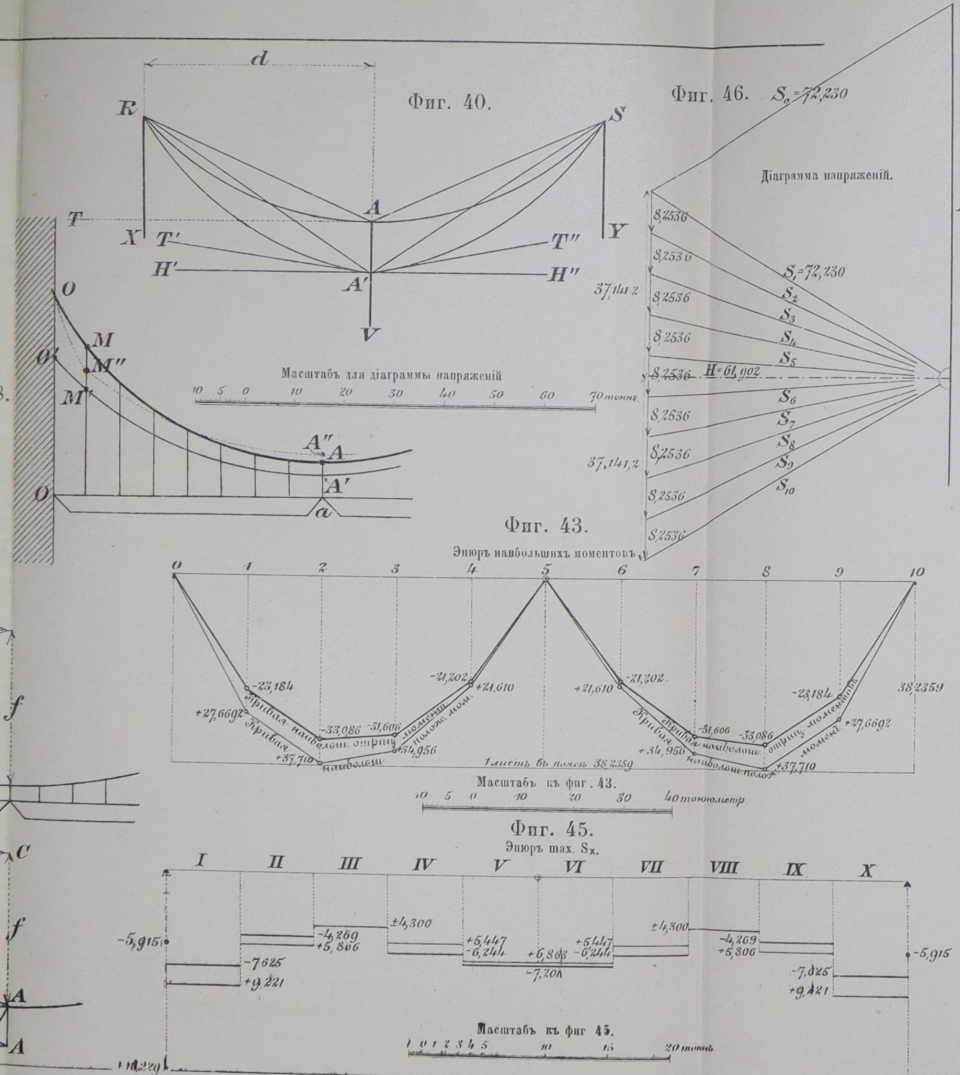
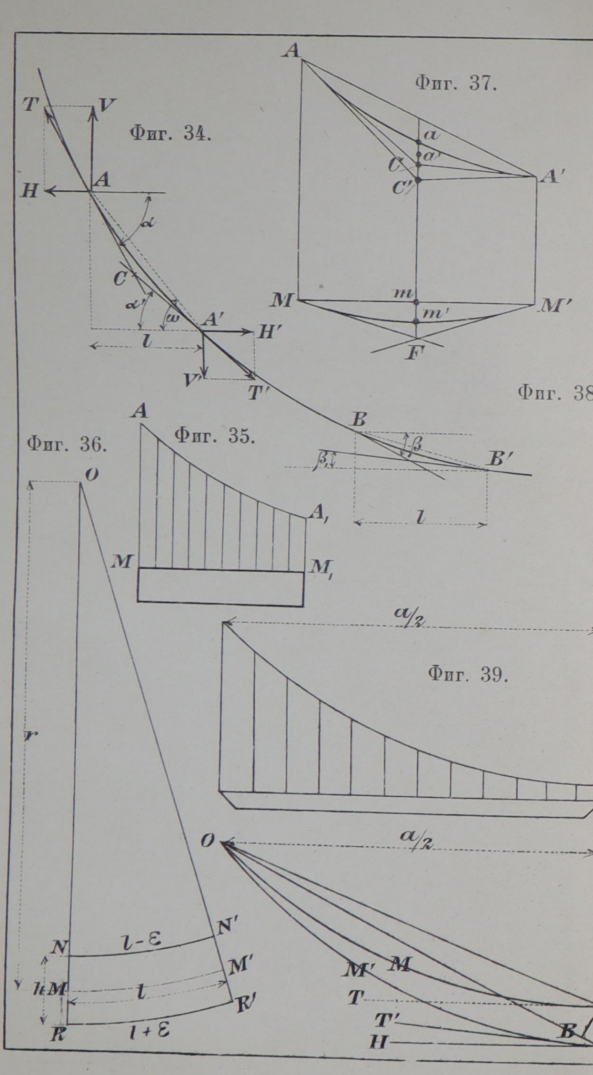


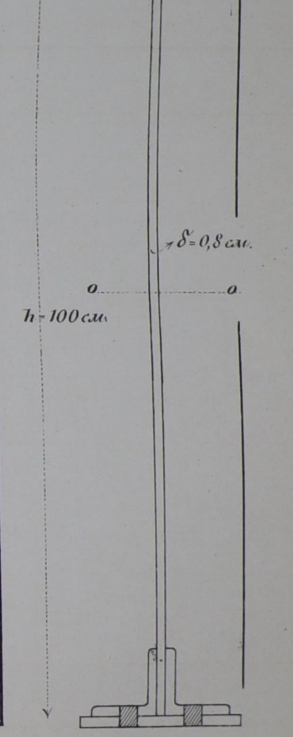
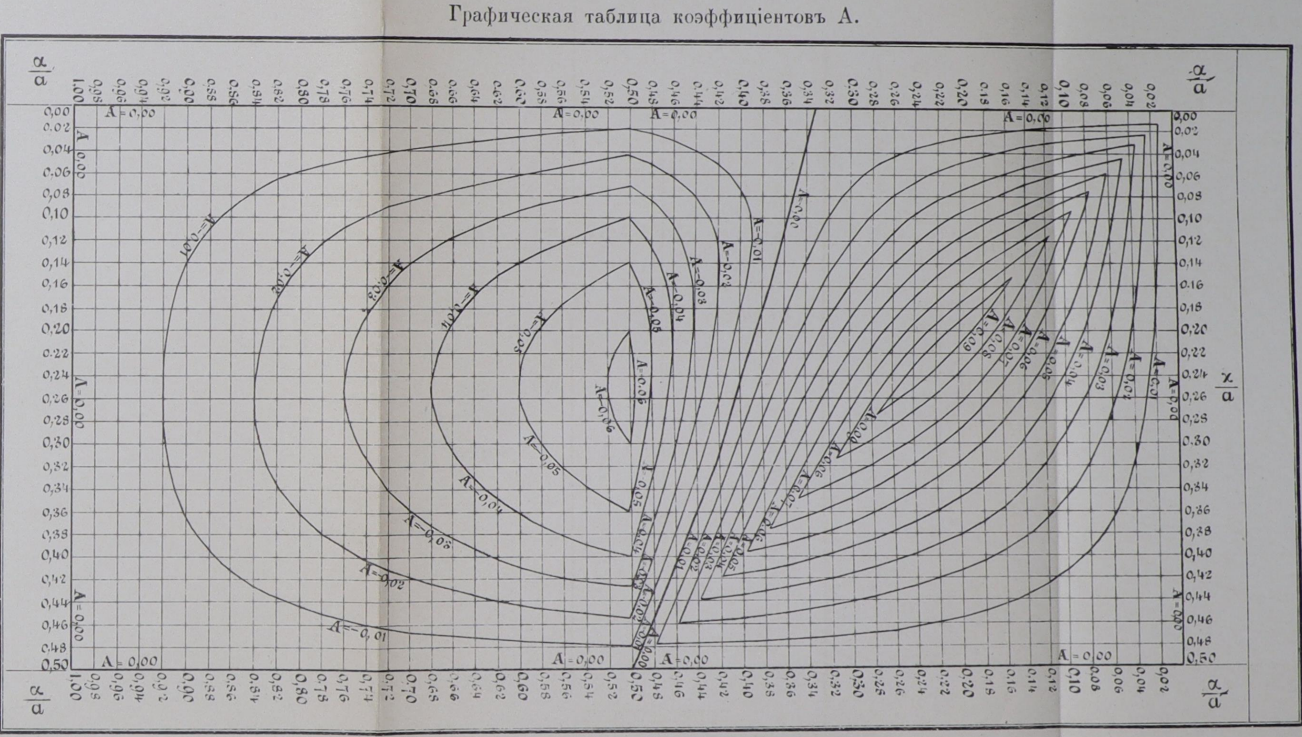
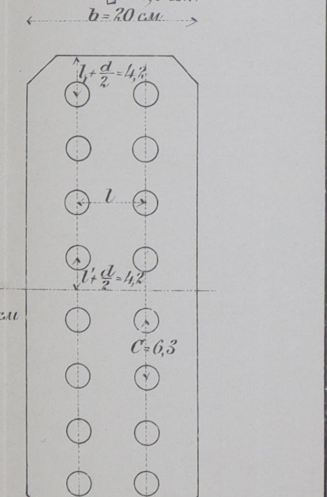
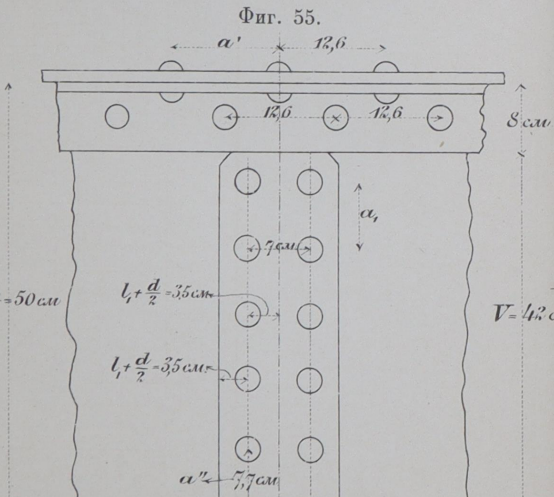
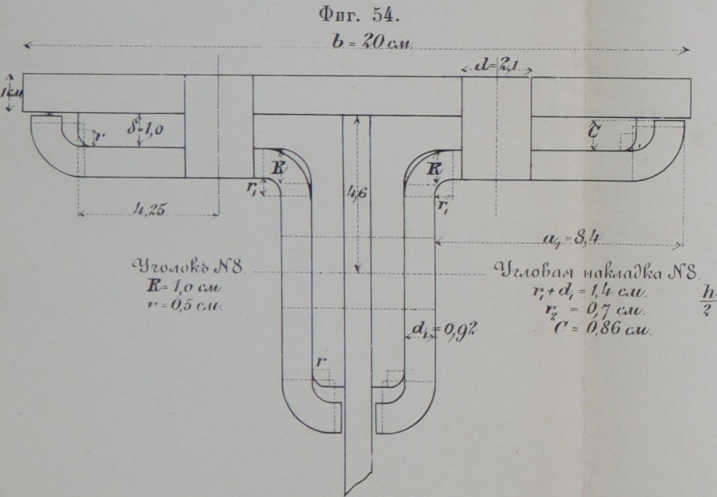
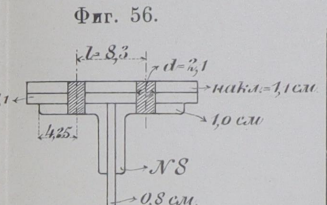
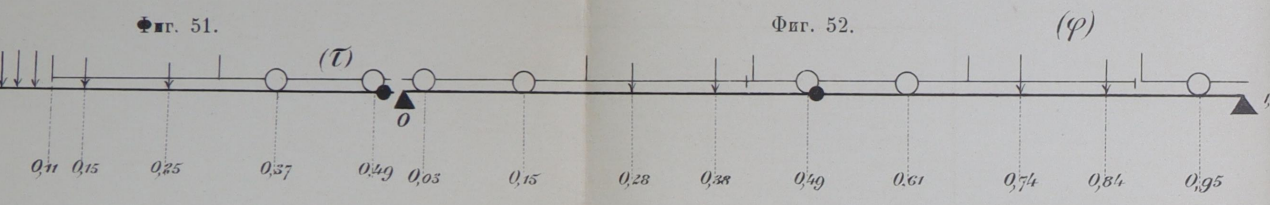
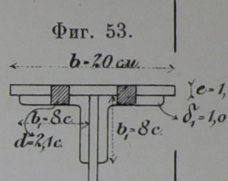
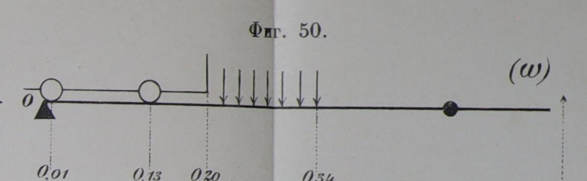
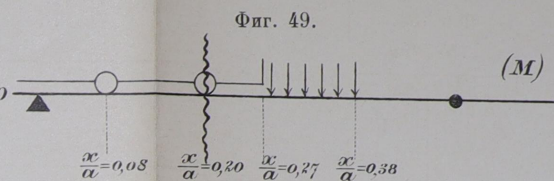
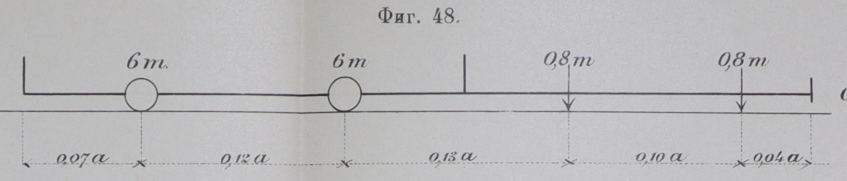
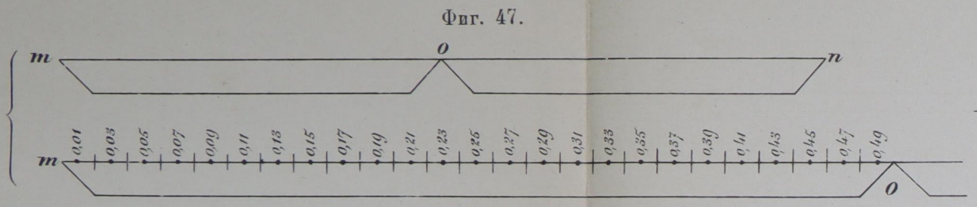
Фиг. 8.



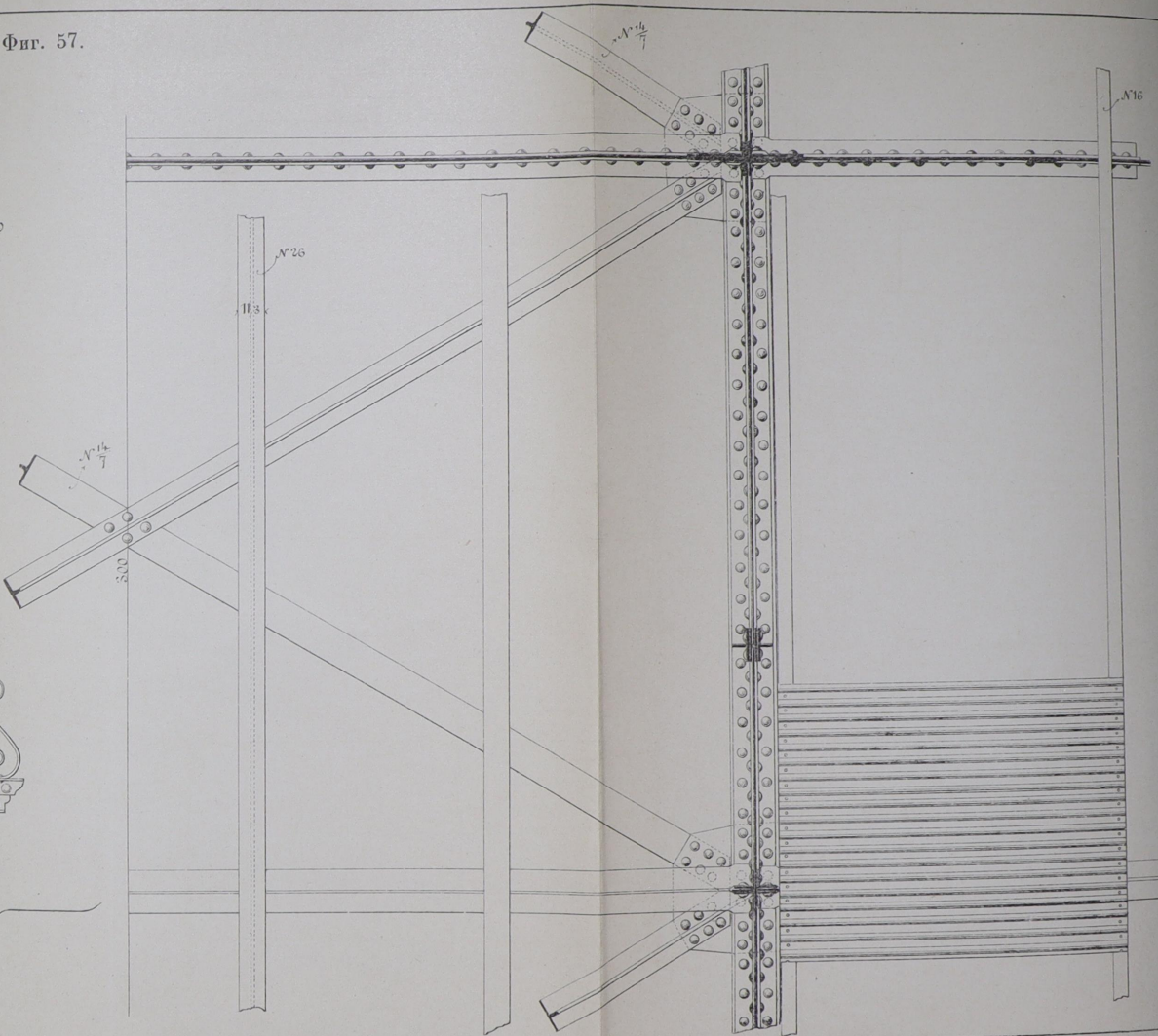
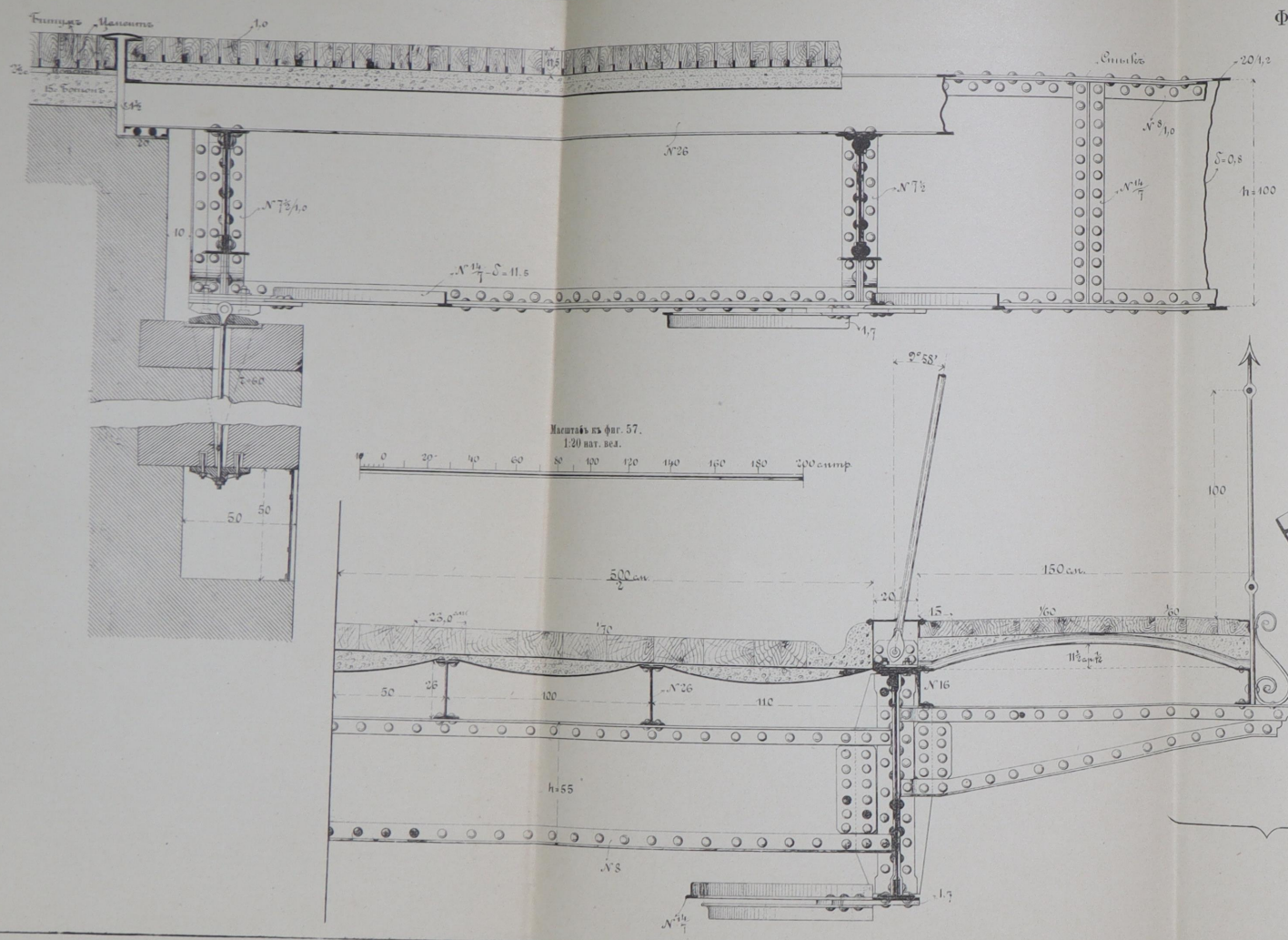




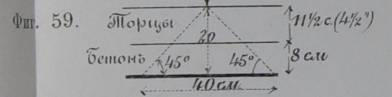
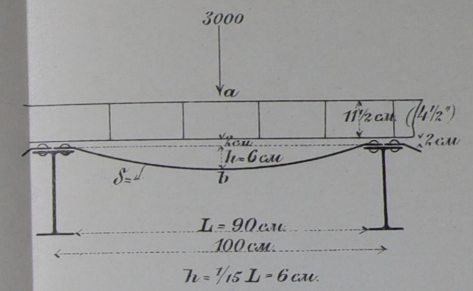




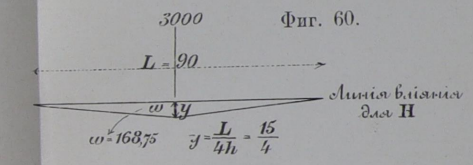
Фиг. 57.



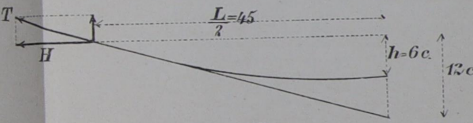
Фиг. 58.



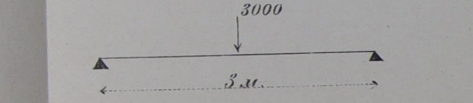
Фиг. 60.

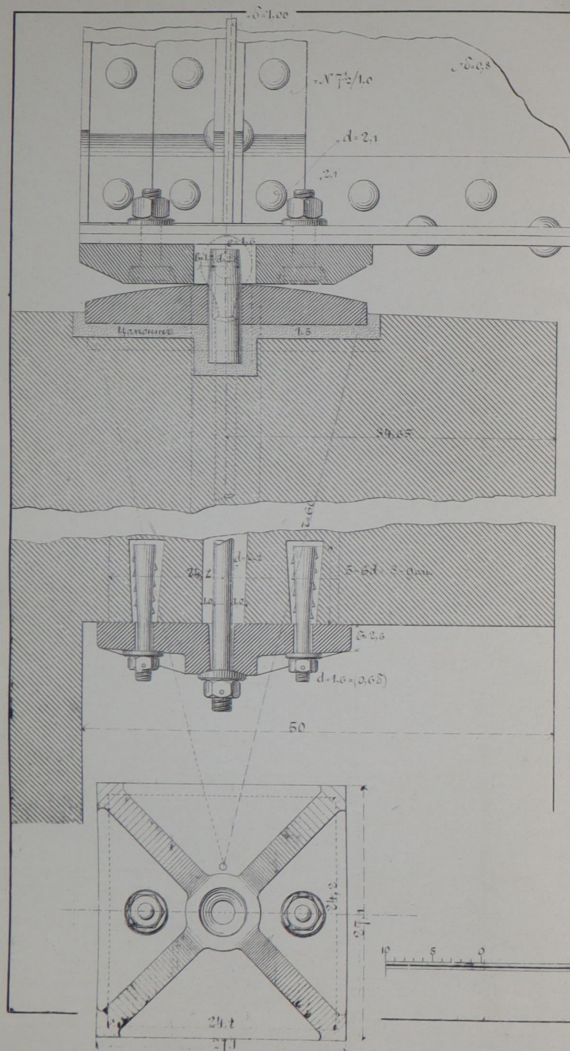


Фиг. 61.

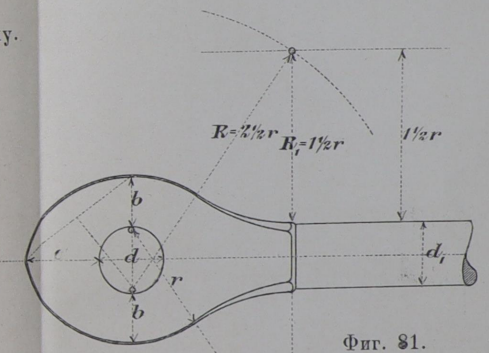
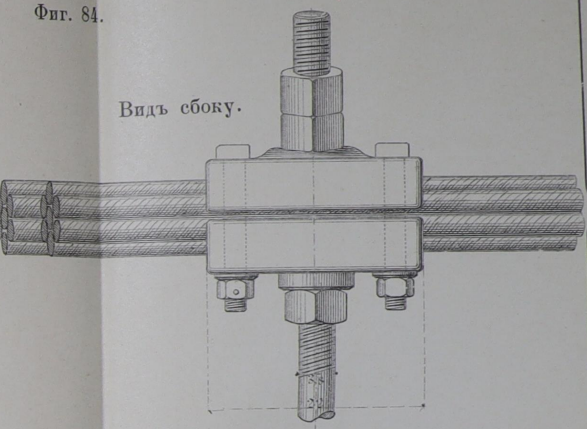
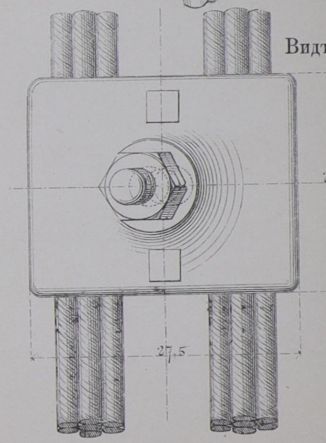
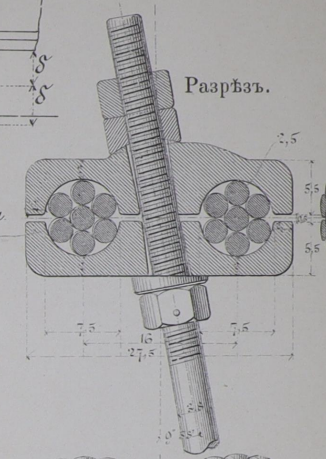
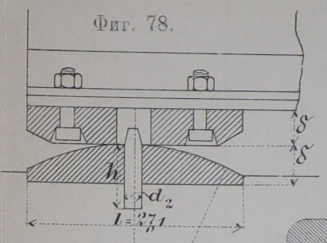
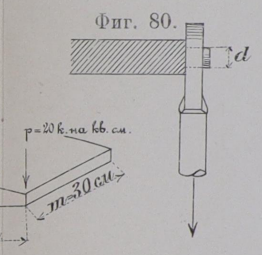
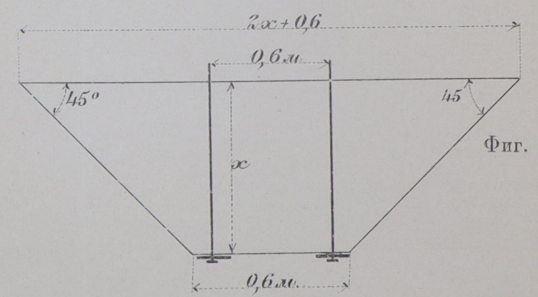
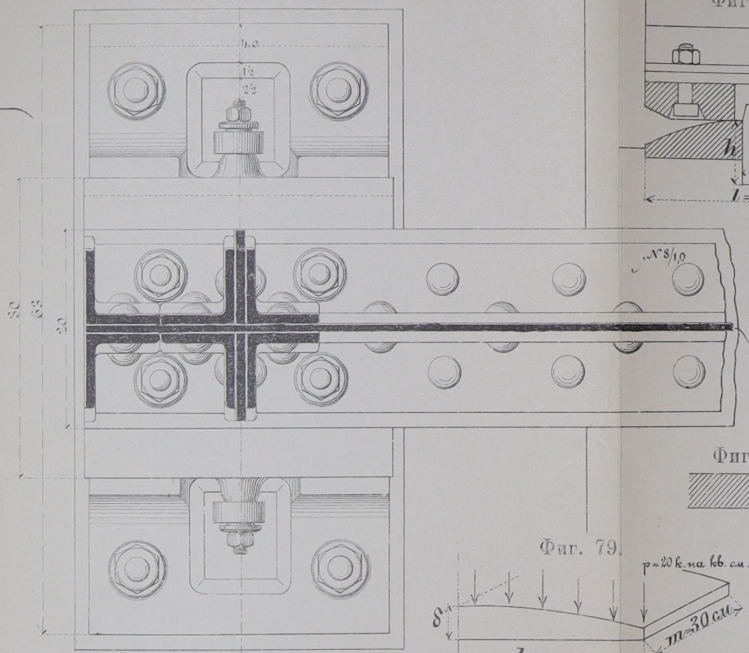
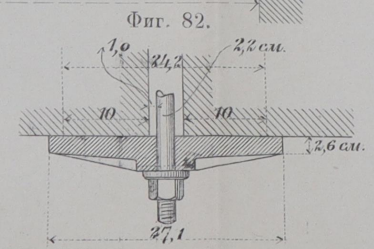
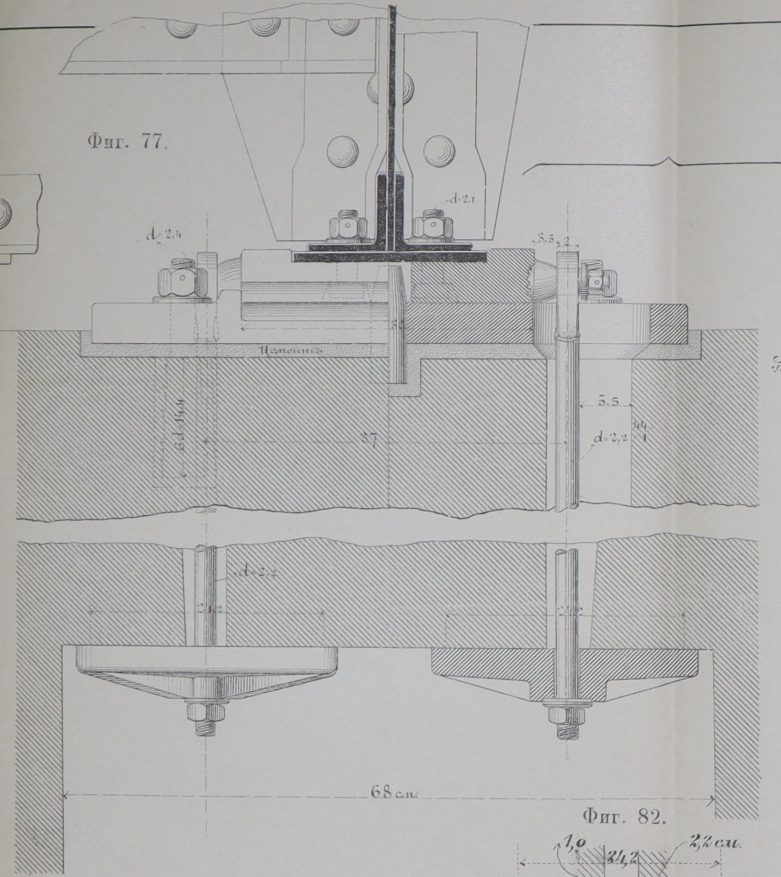


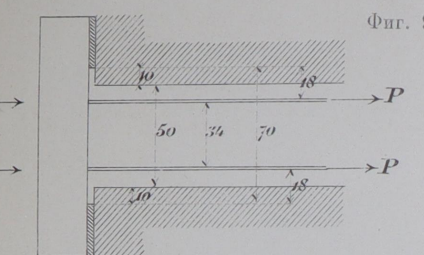
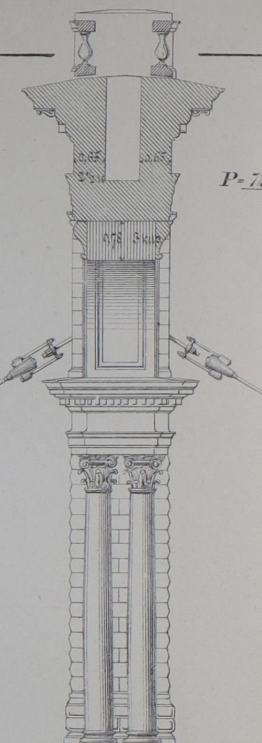
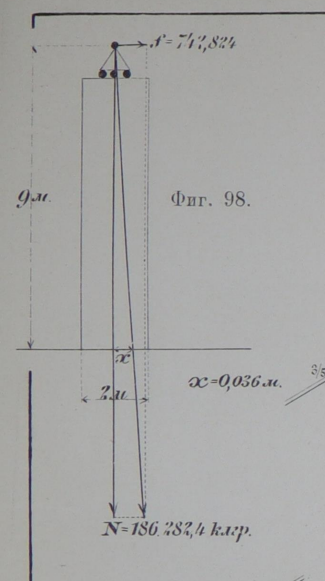
Фиг. 62.



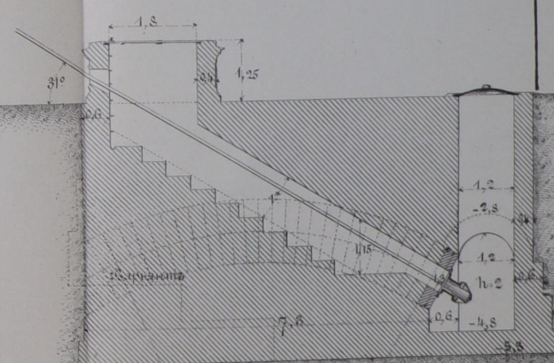
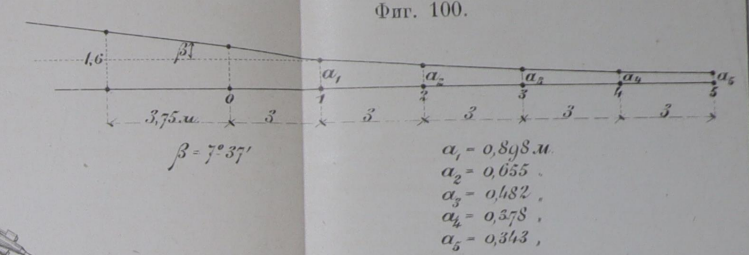
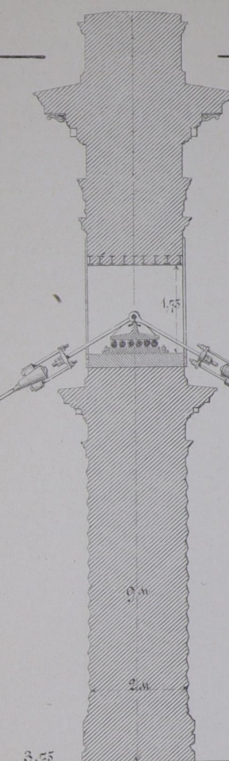
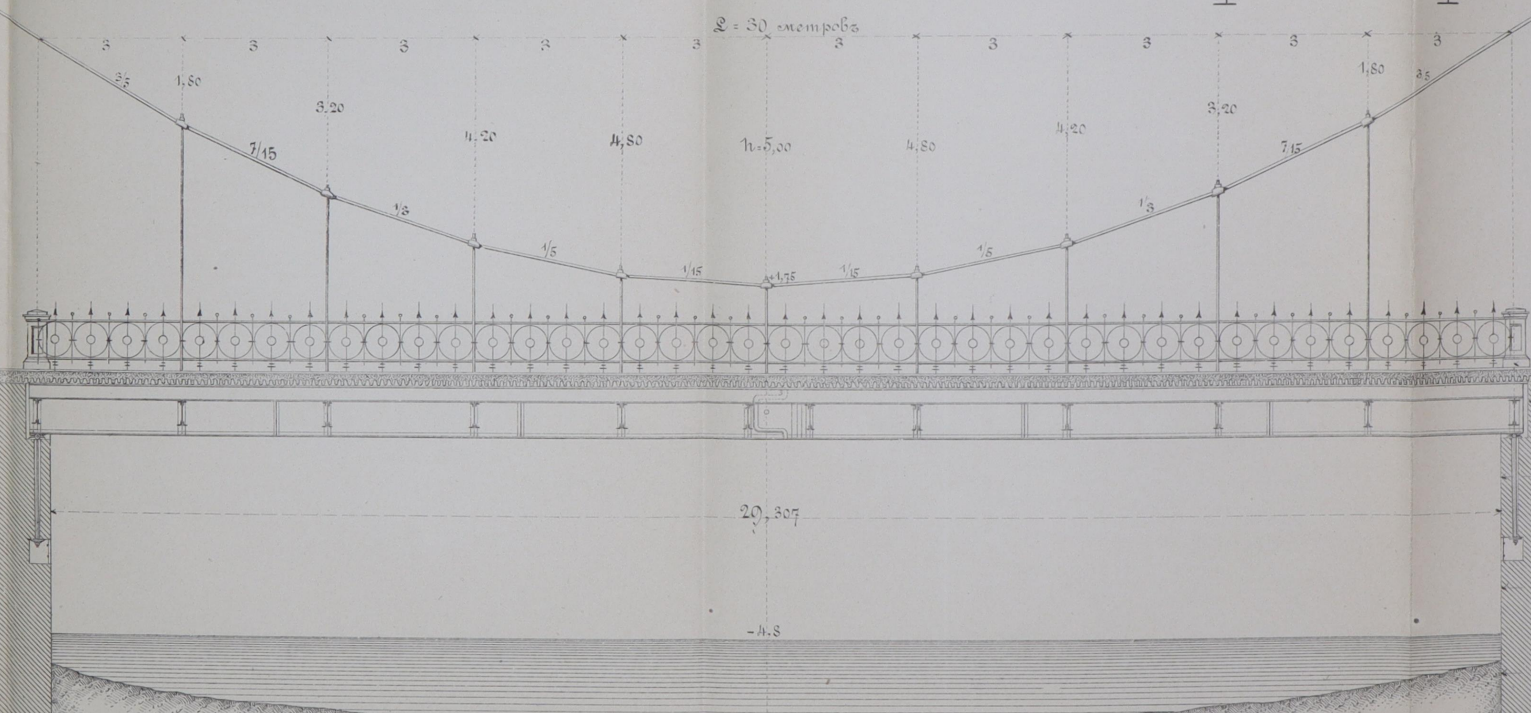
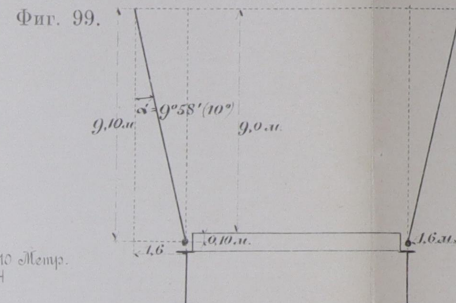


Масштабъ къ фиг. 77,
1:5 нат. вел.



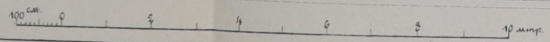
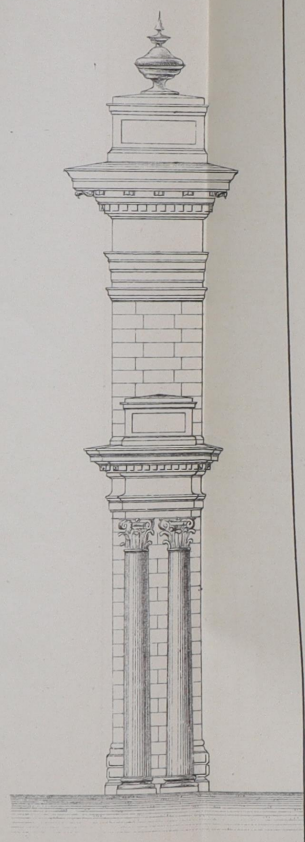
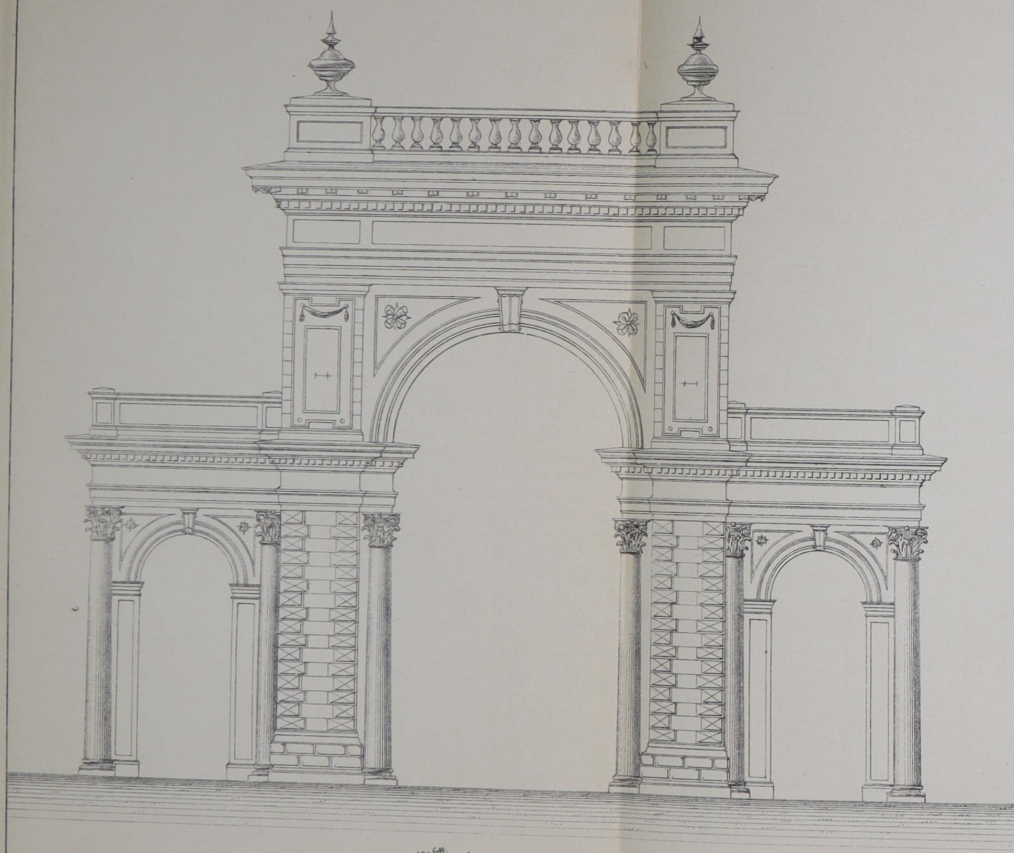


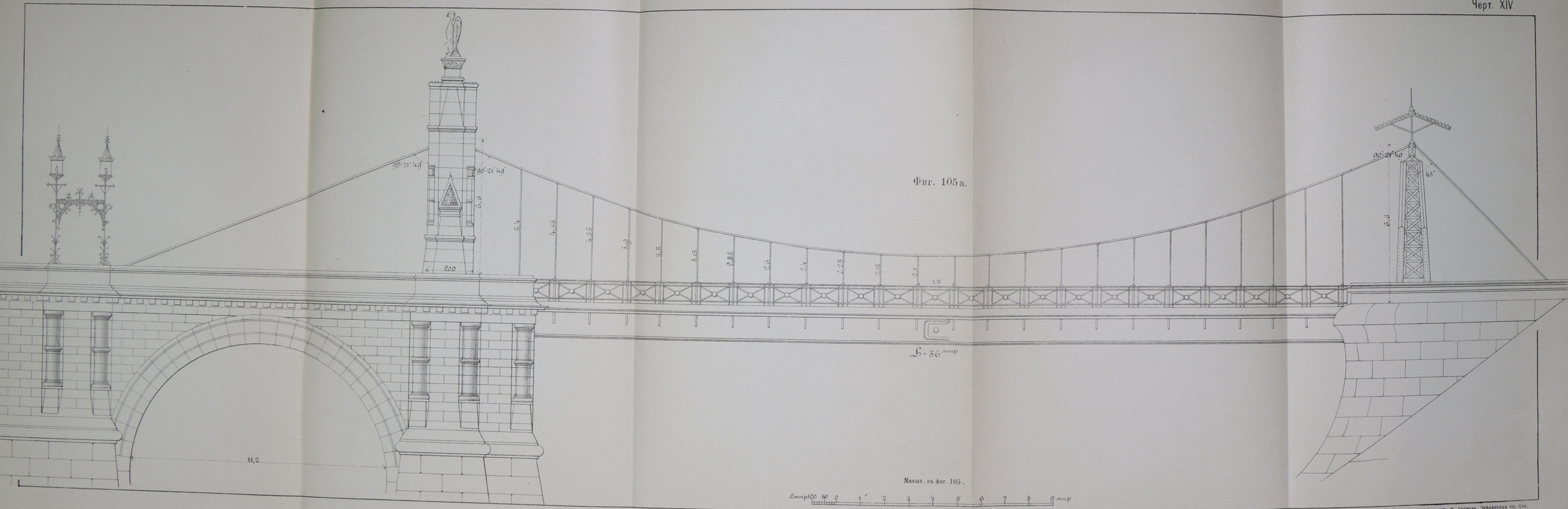
20 100 50 0 1 2 3 4 5 6 7 8 9 10 Метръ.



Фиг. 103. Фасадъ воротъ.

Фиг. 104. Боковой фасадъ.

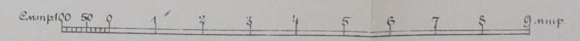




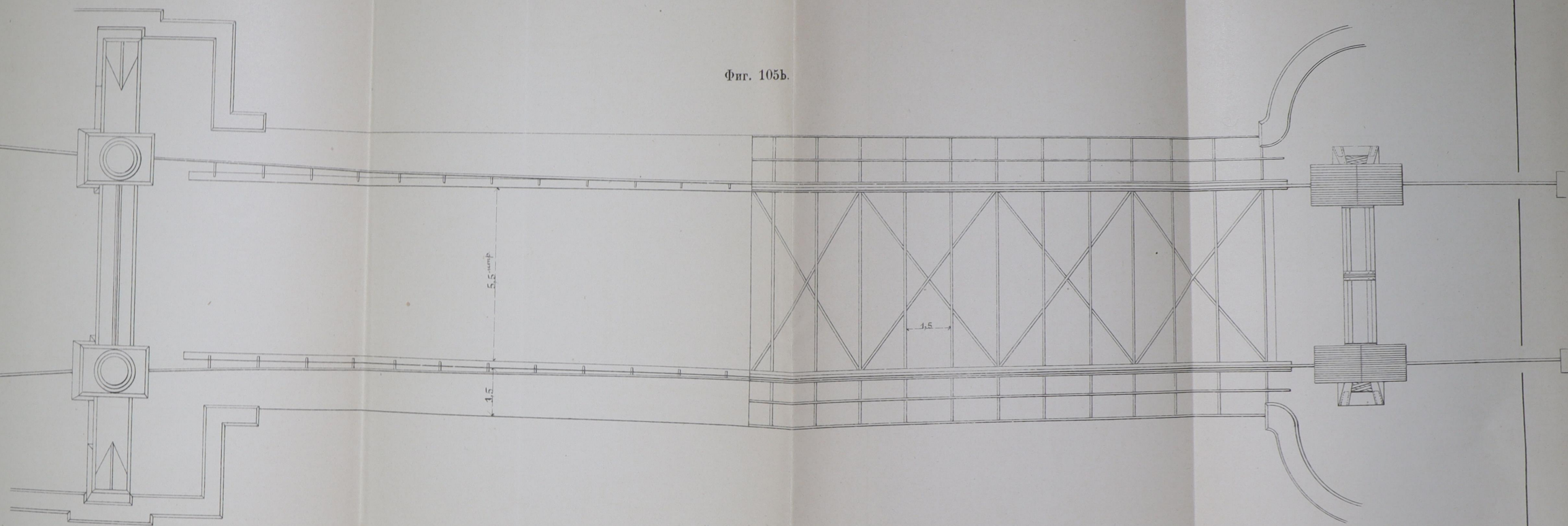
Фиг. 105 а.

$L = 36.000$

Масшт. къ фиг. 105.

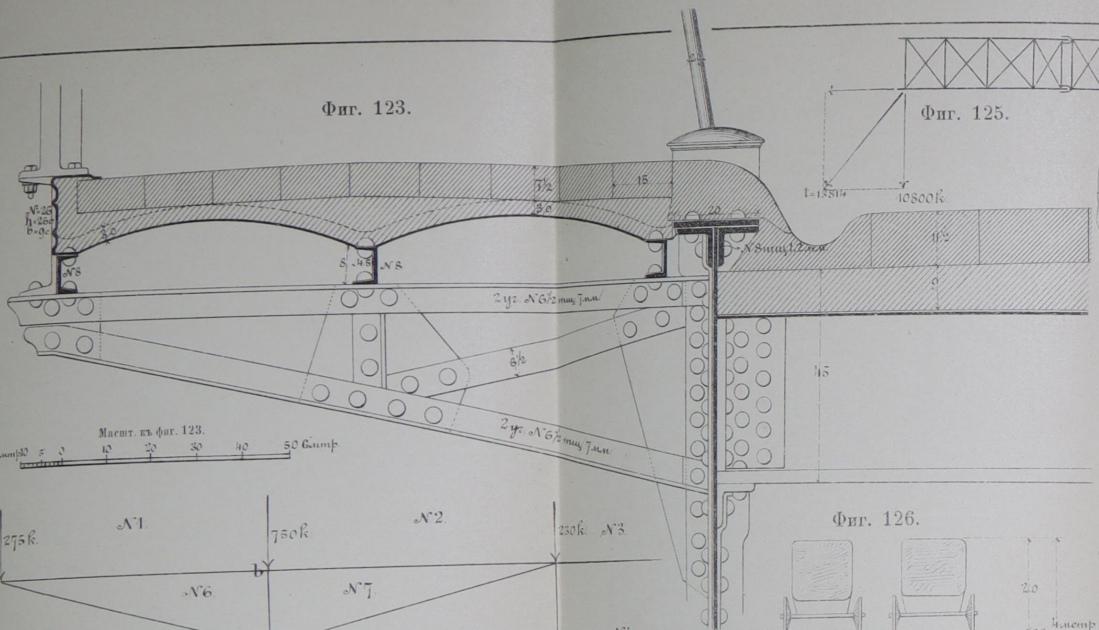


Фиг. 105б.

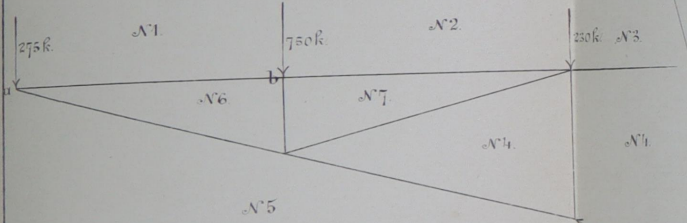


Масшт. к фиг. 105 б.
См. 100 50 0 1 2 3 4 5 6 7 8 9 см.

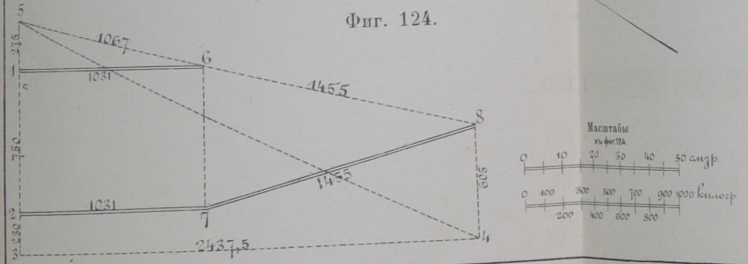
Фиг. 123.



Масшт. къ фиг. 123.
Смтр 0 10 20 30 40 50

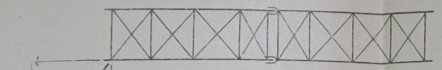


Фиг. 124.

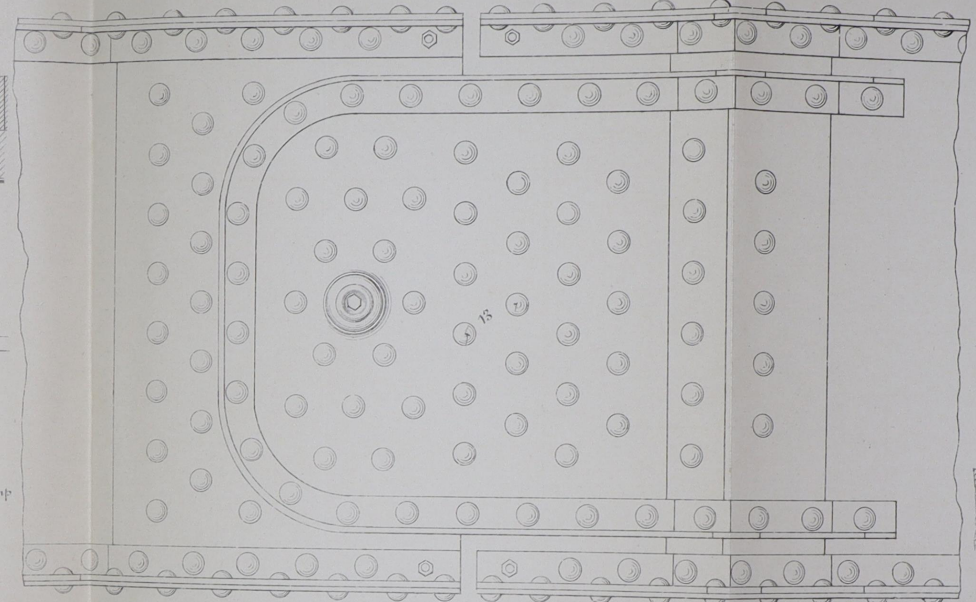


Масштабъ къ фиг. 124.
Смтр 0 10 20 30 40 50

Фиг. 125.

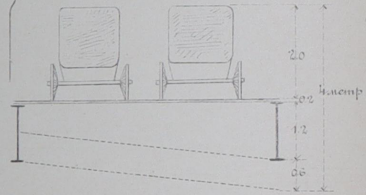


Фиг. 127.

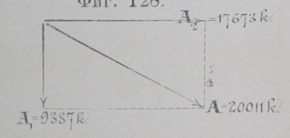


Масшт. къ фиг. 127.
Смтр 0 10 20 30 40 50 60 70 80 90 100 110 120 130 140 150

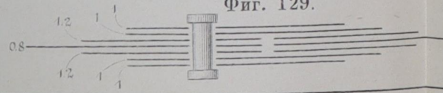
Фиг. 126.



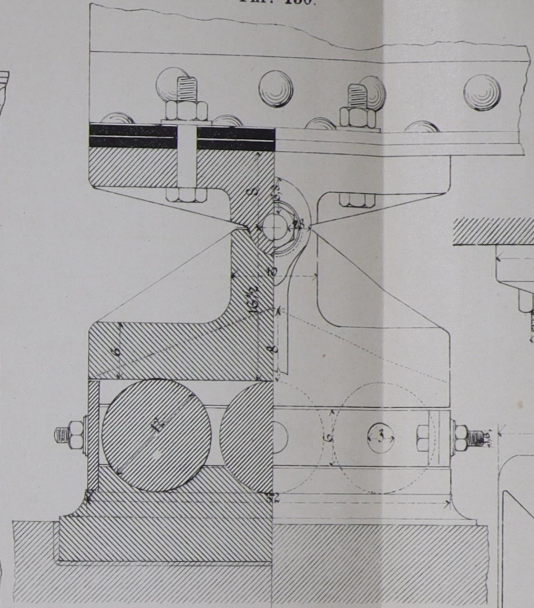
Фиг. 128.



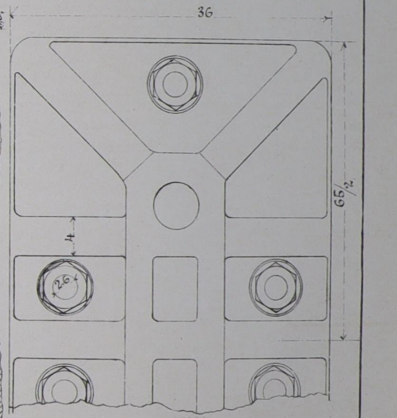
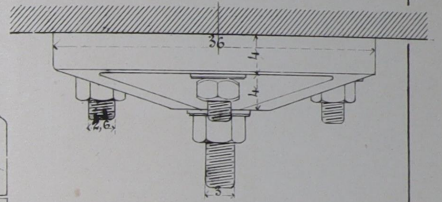
Фиг. 129.



Фиг. 130.

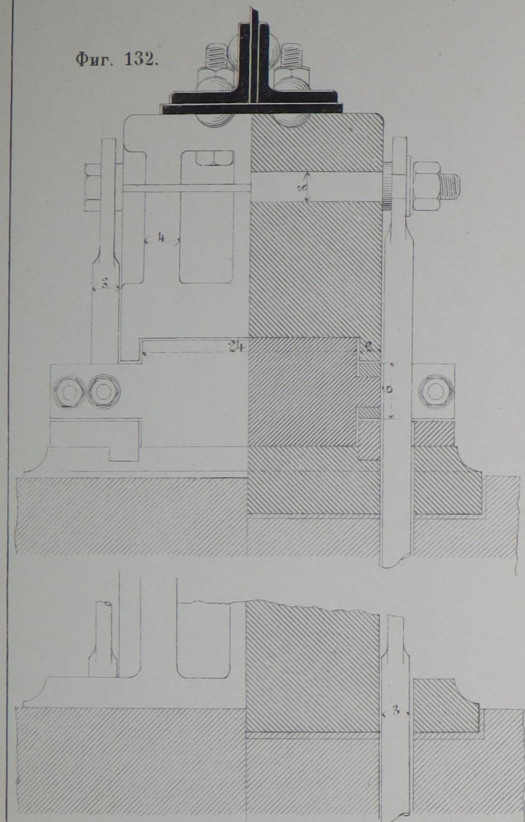


Фиг. 131.



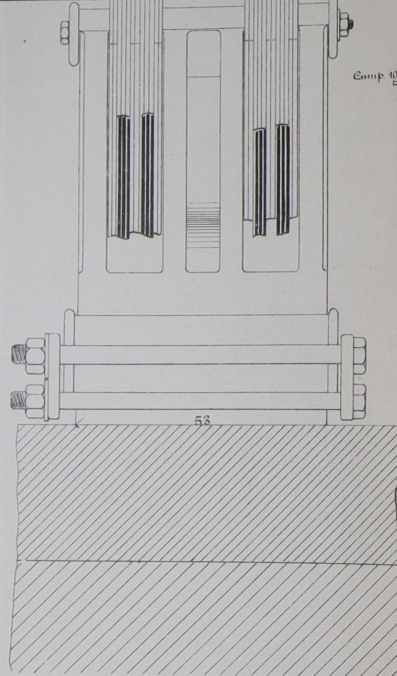
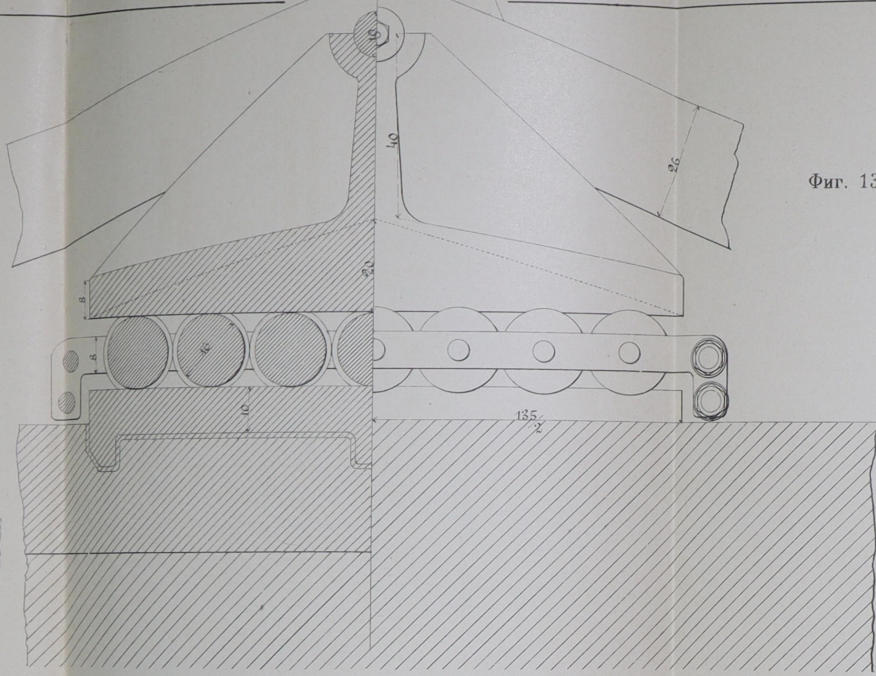
Масшт. къ фиг. 130 и 131.
Смтр 0 5 10 15 20 25 30 35 40 45 50 55 60 65

Фиг. 132.



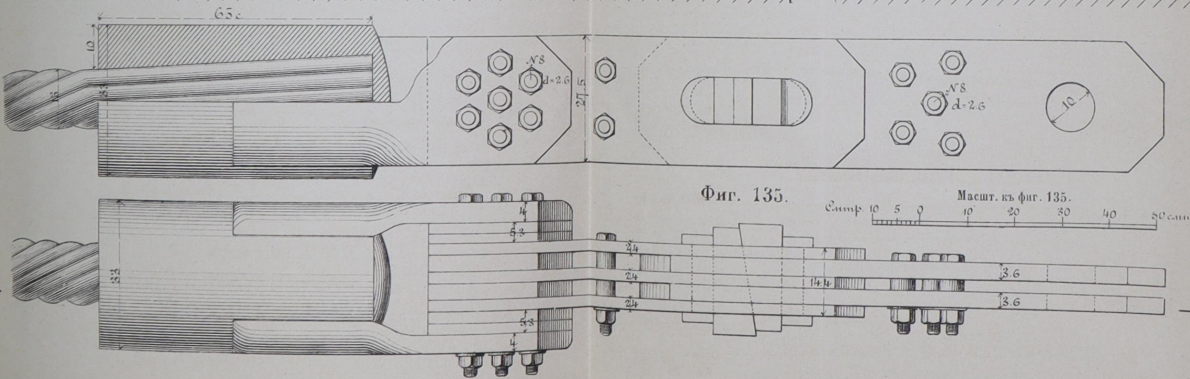
Машт. къ фиг. 132.
Смтръ 5 10 15 20 25 30 35 40 45 50 55 60 65 70 75 80 85 90 95 100

Фиг. 133.



Машт. къ фиг. 133 и 134.
Смтръ 10 20 30 40 50 60 70 80 90 100

Фиг. 135.



Машт. къ фиг. 135.
Смтръ 10 20 30 40 50

Фиг. 134.

